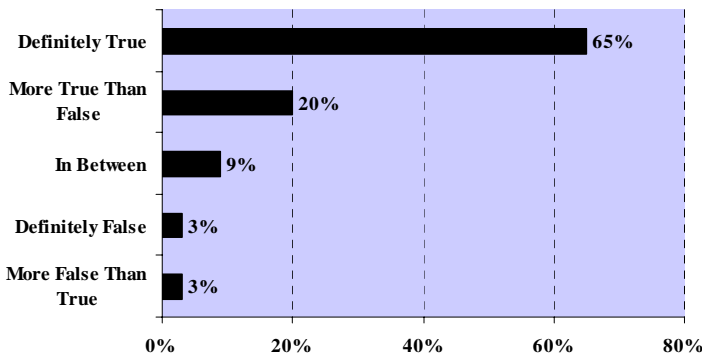


**Students Report High Rates of Teaching  
Excellence at CCC  
*Research Brief No. 2***

The vast majority of CCC students give high marks to the teaching they receive. Nearly two-thirds of students evaluating CCC faculty say it is “definitely true,” when asked if their instructors are excellent teachers. Another one-fifth agree it is “more true than false” that their instructors are excellent teachers.

*CCC Students Agreeing with Statement that Their Instructors are Excellent Teachers*

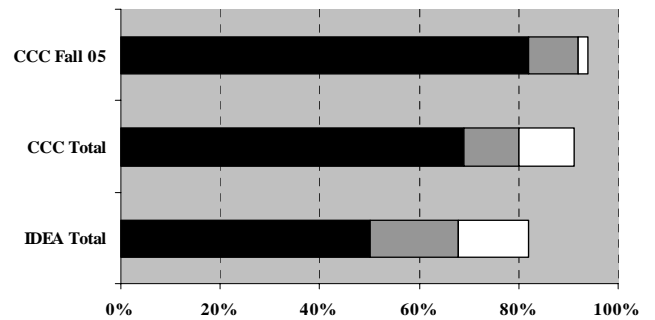


These findings are based on student ratings from Fall 2005 submitted to Individual Development and Educational Assessment (IDEA) Center at Kansas State University. The IDEA Center has been refining college-level faculty and course evaluation instruments for over 30 years. The IDEA survey is touted for having the highest validity and reliability levels of any available national student rating instrument.

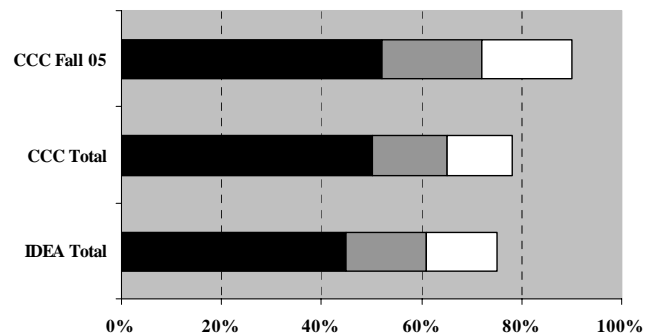
Teaching excellence is seen in part from student achievement on a number of learning objectives. Student progress on these objectives demonstrates that teaching excellence translates into learning. CCC students report consistently higher levels of progress on these objectives than do other college students enrolled in the 60,000 courses evaluated across the nation annually by the IDEA survey.

Among the learning objectives where CCC instructors excel beyond the national comparison are:

*Objective: Learning to apply course material (to improve thinking, problem solving, and decisions)*



*Objective: Learning to analyze and critically evaluate ideas, arguments and points of view*



Percent of classes where rating was at least:

■ 4.0 ■ 3.75 ■ 3.5

*Scale: 1=No progress, 2=Slight progress, 3=Moderate progress, 4=Substantial progress, 5=Exceptional progress*

CCC Fall '05 are the results of IDEA surveys completed for CCC courses during Fall 2005, CCC Total are the results of IDEA surveys completed on each term CCC courses between Fall 2004 and Fall 2005, and IDEA Total are the results for all courses nationwide using the IDEA survey between 1998 and 2001.